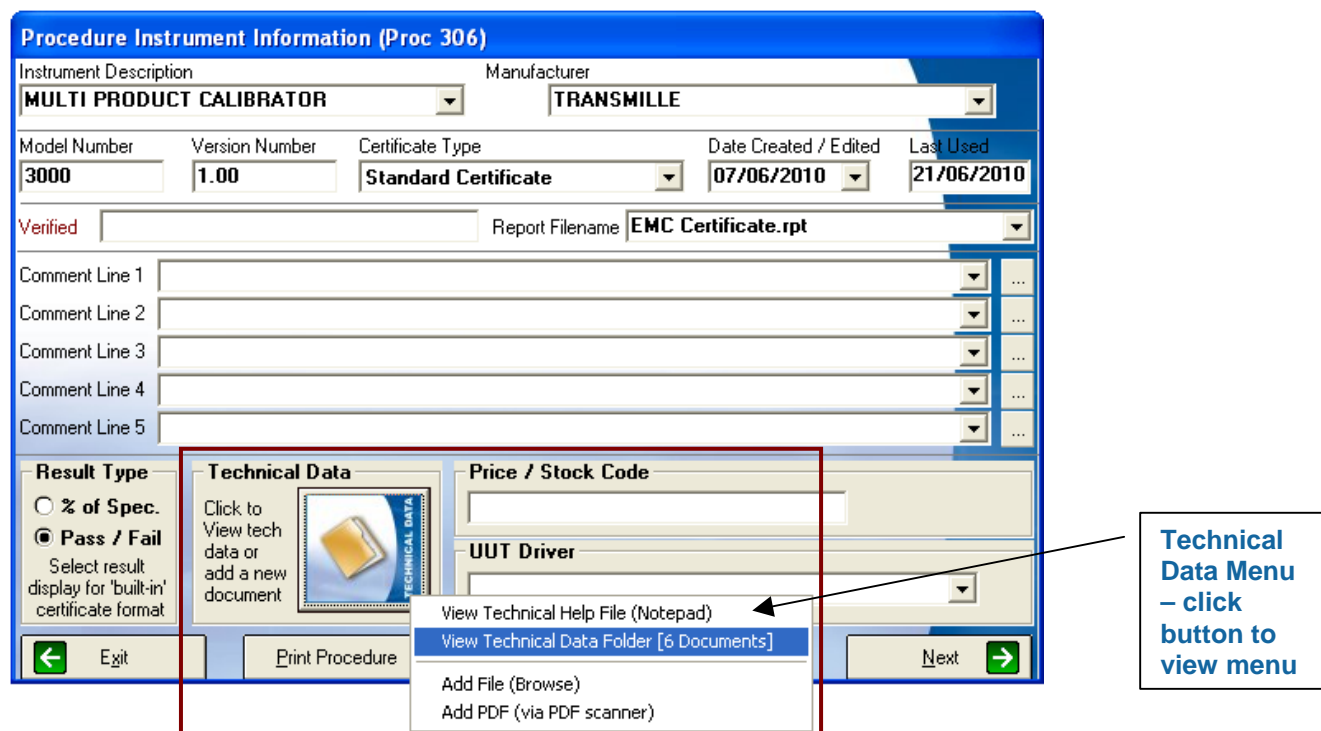


ProEdit Technical Data Support

ProEdit now features a dedicated technical data storage system, allowing any type of file to be linked with a procedure (on the server if networked).

This system supports both manual selection of a file by Browsing the computer / network or by scanning a file in PDF format (using the ScanSnap range of PDF scanners or similar).

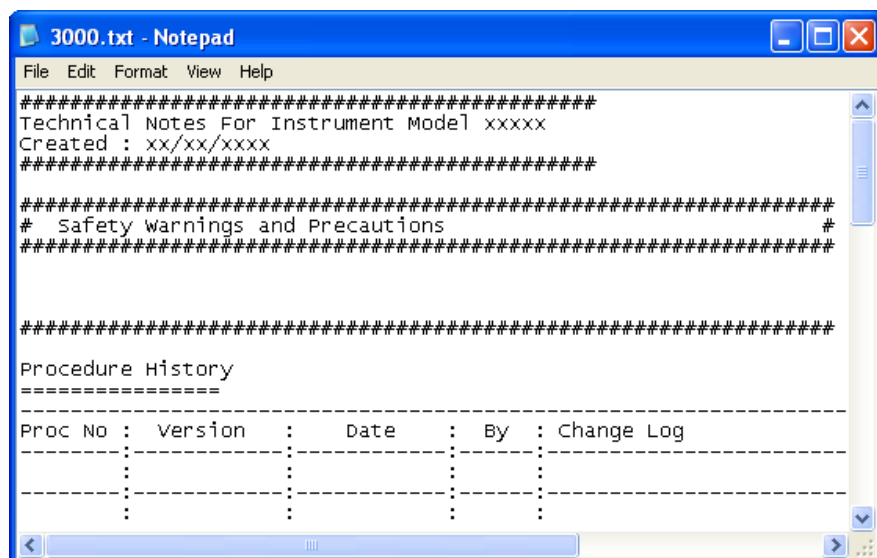
The technical data functions are available using the new button on the instrument information screen in ProEdit:



View Technical Help File (Notepad)

Loads a notepad template with sections to store text notes on calibration and adjustment etc.

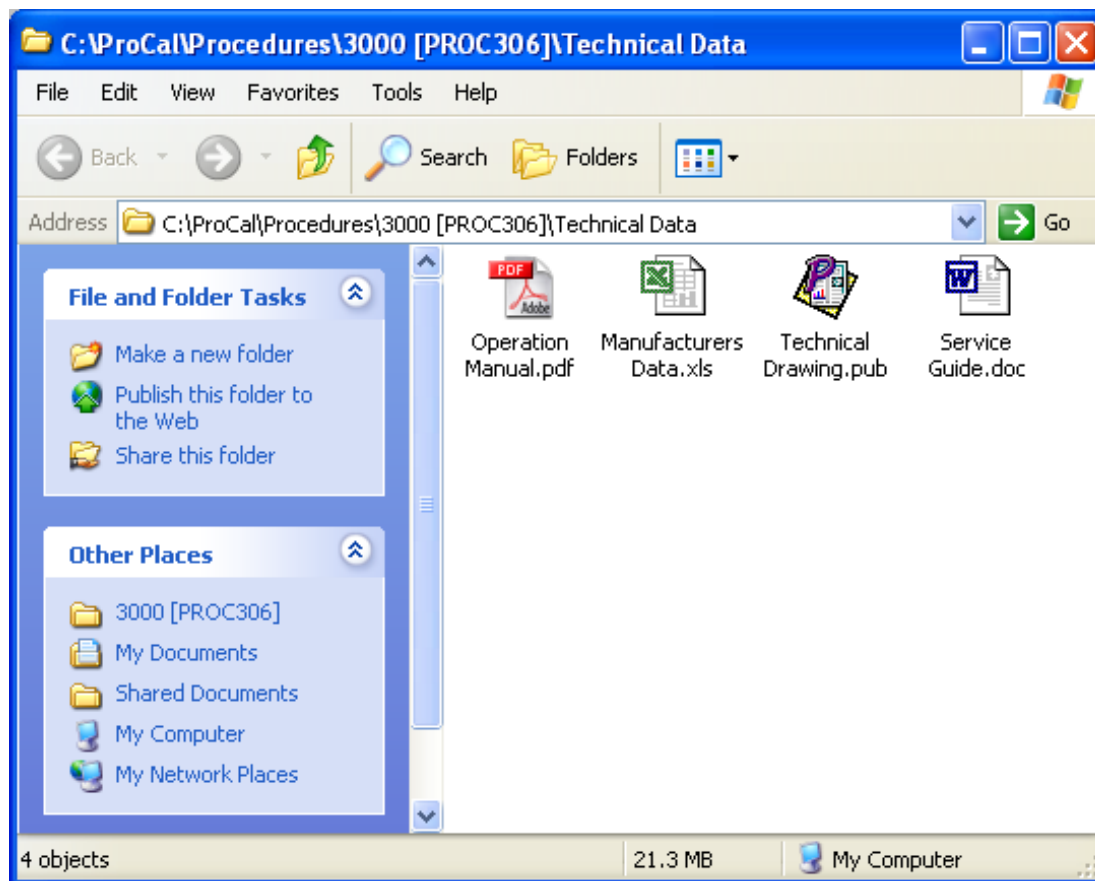
This file is linked to the procedure via its model number and is available across a networked system



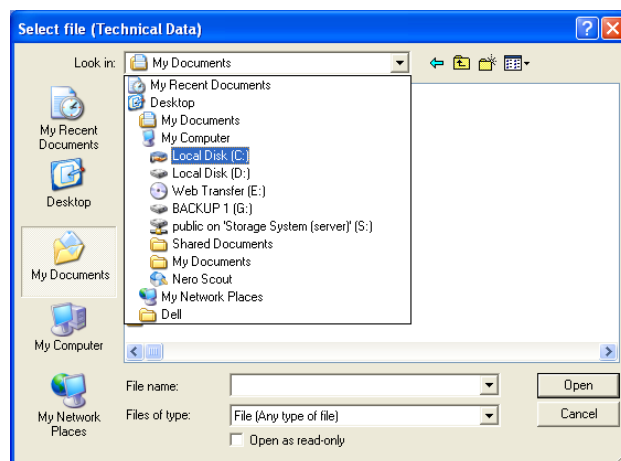
View Technical Data Folder

This menu option displays a folder containing any files associated with this procedure. This function displays files linked to the procedure, for example PDF, Word, Excel, Publisher (as shown below) – simply double click on a file to open (requires suitable program installed on the computer to view file).

Note : As an easy indication of the number of Technical Data files available, the menu will display the number of documents available in the caption, eg. **View Technical Data Folder [6 Documents]**

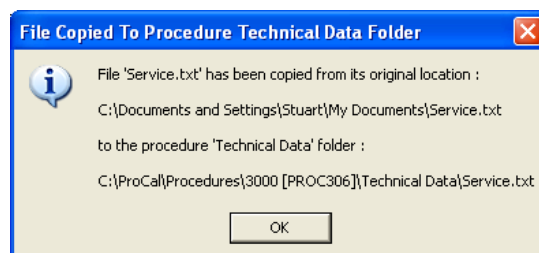


Add File (Browse)



The Add File menu allows a file to be selected – this is automatically copied from the original file to the Technical data folder (stored with the procedure files, either locally or on the server for networked systems)

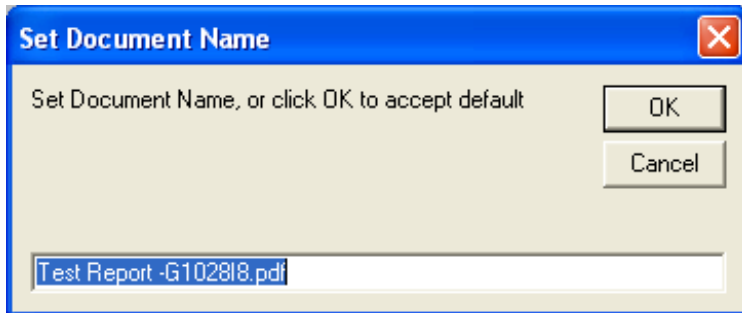
A message confirms the file has been copied :



Add PDF (via PDF Scanner)

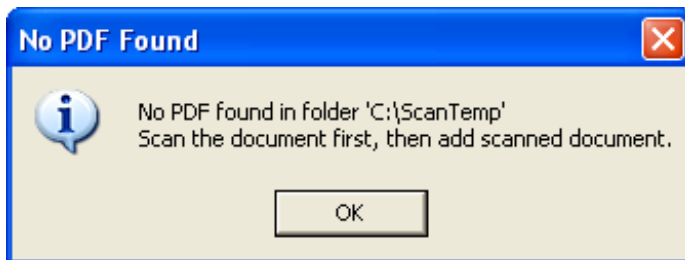
If a PDF scanner is currently in use with Transmille software (scanner setup to store scanned PDFs in a local C:\ScanTemp folder) a scanned technical data document can be instantly linked to the procedure and stored in the Technical Data folder.

When this function is selected, a message will be displayed showing the LATEST file to be scanned and stored in the C:\ScanTemp folder :



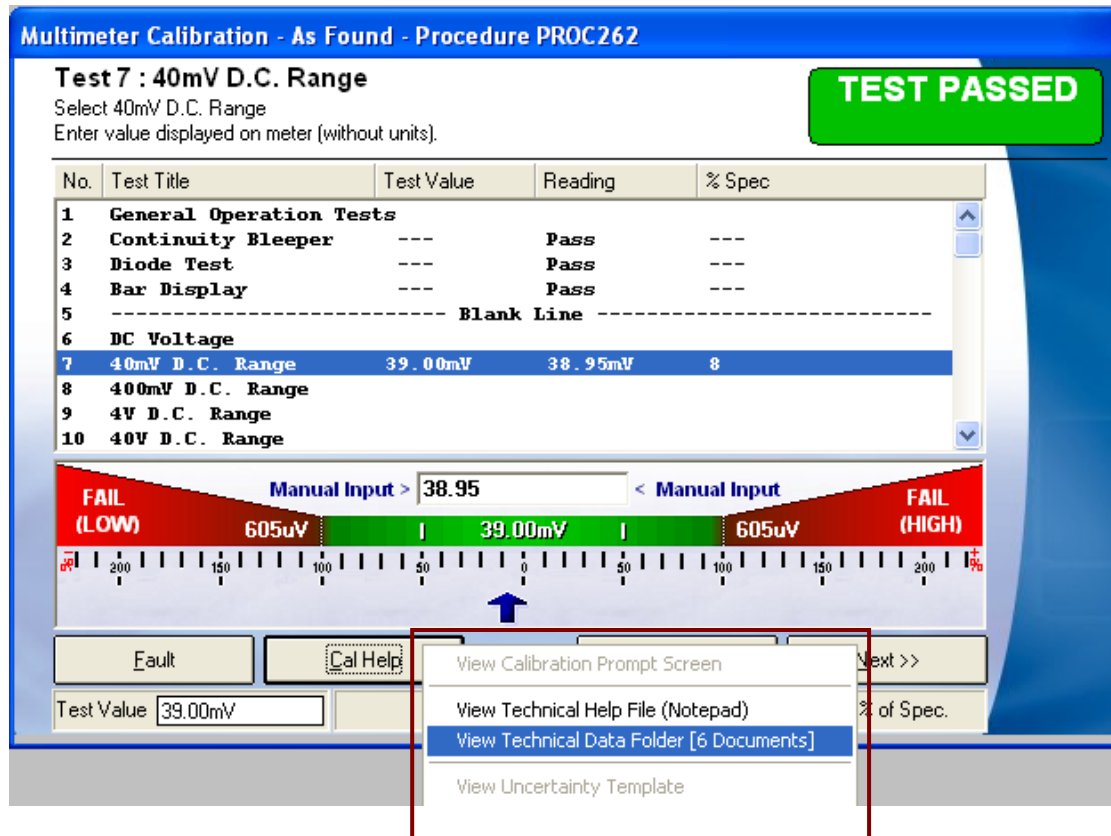
The user can rename the file if required, then click OK to transfer the file to the Technical data folder linked with the procedure.

If a PDF document does not exist in the C:\ScanTemp folder the following message will be displayed –in this instance make sure the document is scanned FIRST then click the Add PDF (via PDF Scanner) menu item.



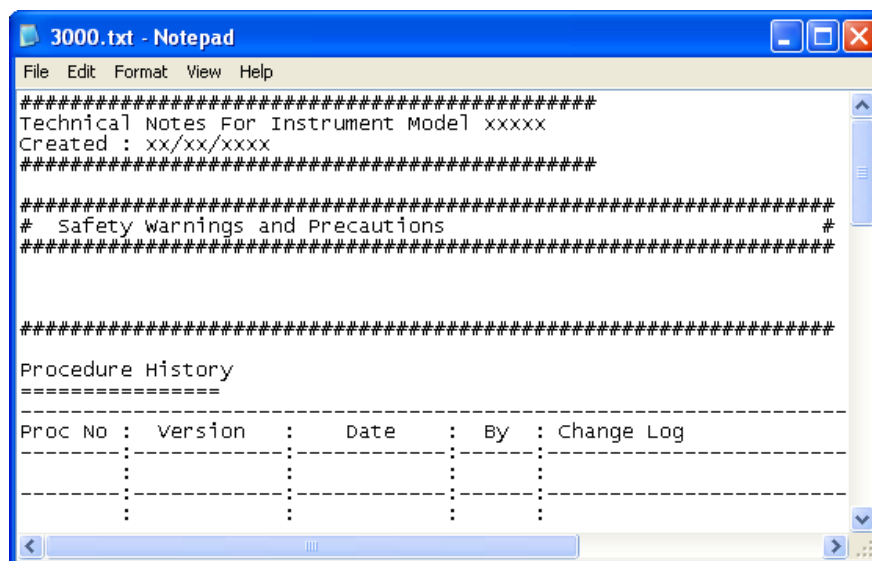
ProCal – Technical Data Functions

ProCal provides the facility to view the Technical Help file (via notepad) or view the technical data folder using the menu as shown below :



[View Technical Help File \(Notepad\)](#)

Loads a notepad template with text notes on calibration and adjustment etc. as created by the user
This file is linked to the procedure via its model number and is available across a networked system



View Technical Data Folder

This menu option displays a folder containing any files associated with this procedure. This function displays files linked to the procedure, for example PDF, Word, Excel, Publisher (as shown below) – simply double click on a file to open (requires suitable program installed on the computer to view file).

Note : As an easy indication of the number of Technical Data files available, the menu will display the number of documents available in the caption, eg. **View Technical Data Folder [6 Documents]**

It is also possible to add extra files into the folder while it is open – these will then be available across the system including via ProEdit. There is no limitation on the types of files stored, even video data can be stored in this folder (requires suitable program installed on the computer to view files)

